


# CARE BRAVELY

The best care  
is more than medical



 LIFEBRIDGE HEALTH®

Carroll Hospital • Levindale • Northwest Hospital • Sinai Hospital



**At LifeBridge Health, we treat people,  
not patients. We respond to challenges  
with leadership. We solve problems  
creatively. We Care Bravely.**

CONTENTS

LETTER FROM THE CEO .....	2
COMMUNITY .....	6
INNOVATION .....	14
EDUCATION .....	22
LIFEBRIDGE HEALTH AT A GLANCE .....	26
NETWORK OF CARE .....	28
LIFEBRIDGE HEALTH PARTNERS .....	30
COMMUNITY PARTNERS .....	32
CHANGING LIVES THROUGH PHILANTHROPY .....	34
OUR LEADERSHIP .....	37
BOARD OF DIRECTORS .....	38

**Pictured on the cover:**  
Samantha Glover  
Registered Nurse IV  
Neonatal Intensive Care Unit  
Sinai Hospital



## LETTER FROM THE CEO

Dear Friends,  
Since 1866, LifeBridge Health has gone beyond the call of duty to serve those in need without bias, and we're still here today changing how care is given.

This year, we've launched a movement called Care Bravely. More than an ad campaign, Care Bravely is about recommitting and continuing to invest in our purpose. It's a conversation about what we stand for, what we offer, how we see ourselves and, most importantly, how our patients feel about their experience under our care. Binding our mission and vision together, Care Bravely inspires our team members to live our purpose with everything we do.

In this report, you'll read about how we Care Bravely by continuing to push the boundaries of healthcare through innovation, education and hands-on caring for our community.

By supporting innovation, we're able to bring healthcare to our patients by making their access as seamless as possible. Through digital health initiatives, we're able to use smartphones and mobile devices to make healthcare more personalized and timely. The LifeBridge Health BioIncubator, based at Sinai Hospital, hosts biotech startups that are developing life-altering devices and diagnostic tools that will benefit people everywhere.

As we solidify partnerships in our communities, we're taking our purpose of "caring for our communities together" beyond its current definition. Through our partnerships with Safe Streets and the Baltimore Child Abuse Center, we are diligently working with organizations to ensure we are

continuing the vital work of making our world better, one person at a time.

Through educational efforts, our teams are striving to create healthier people by offering support and training to those who need it most. Our Veteran Hiring and Training program helps veterans transfer skills developed in the military to civilian careers, and our #StrongerHearts collaboration with the American Heart Association provides heart health information by giving the community resources and medical expertise.

Thank you for helping us Care Bravely. It's not just a slogan. It's a promise to every patient we see.

Sincerely,

**Neil M. Meltzer**  
President and CEO  
LifeBridge Health

**“Binding our mission and vision together, Care Bravely inspires our team members to live our purpose with everything we do.”**

“While going through the worst thing in the world, our healthcare team became family to us. They not only take care of the patient, but they provide compassionate care for the family as a whole.”

**Matthew Mittleman and  
Lauren Shapiro**

“The LifeBridge Health team is made up of skilled professionals who worked together to investigate my symptoms and diagnose my condition. Once diagnosed, I was cared for with the utmost respect and treated not just as a sick patient, but as a whole person learning to live with an illness and adjusting to my new normal.”

**Melissa Seltzer**

“My doctor said that she knew exactly how I felt – she had cancer twice herself. This beautiful, intelligent woman who was going to save my life knew exactly where I was coming from. That was tremendous.”

**Lisa Schwartzbeck**

Care Bravely illuminates the way LifeBridge Health is redefining healthcare by going beyond the traditional. We Care Bravely by caring for our **community** outside our hospital walls, promoting **innovation** in medical protocols and business practices, and providing **education** to empower people to make a difference.

# CARE BRAVELY



## COMMUNITY

PAGE 6

Caring for vulnerable children

Investing in our communities

Partnering for the greater good

Supporting mothers and babies

Working for a cleaner environment

## INNOVATION

PAGE 14

Anticipating patients' needs

Answering calls 24/7

Easing access to care with digital technology

Dedicating space for research and entrepreneurship

Providing transportation

## EDUCATION

PAGE 22

Integrating veterans

Investing in young students

Using a multichannel approach to reach people

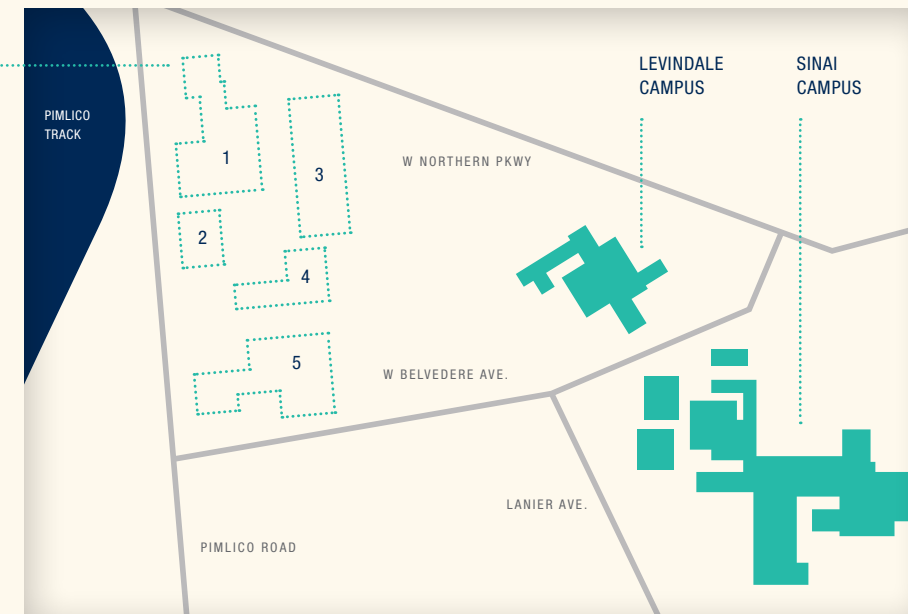
# Community

PARTNERING FOR BETTER HEALTH  
AND QUALITY OF LIFE FOR ALL



## Pimlico Campus

1. AMBULATORY HUB
2. CENTER OF HOPE
3. PARKING
4. INNOVATION HUB
5. ACADEMIC, RESEARCH, JOB CREATION HUB



## Sinai/Baltimore Campus Vision

“ THIS PROJECT IS THE FIRST STEP IN OUR VISION OF BECOMING THE MOST ACCESSIBLE AND INNOVATIVE HEALTHCARE SYSTEM IN MARYLAND.



**James Roberge**  
VICE PRESIDENT, CAPITAL IMPROVEMENTS  
AND SUPPORT SERVICES

The Sinai Expansion Project began as a plan to replace aging infrastructure but soon became a vision to reinvent the hospital campus. The new development aims to provide patient-friendly, consolidated medical care, spark innovation and create opportunities for the community, with:

**Integrated care.** Consolidated services in one easy-to-access location.

**Enhanced safety.** Easy-to-navigate footpaths and convenient parking for patients and staff.

**Room for innovation.** Dedicated space for health IT and biotech companies, complementing LifeBridge Health's wildly popular BioIncubator.

**Community services.** A spacious home for Baltimore Child Abuse Center, with room for all the services that children and families in crisis need.

**Economic growth.** LifeBridge Health's significant investment will catalyze community development, attract new business and create new jobs.

# \$43M

WENT INTO THE RECENT REDEVELOPMENT OF PIMLICO ELEMENTARY/MIDDLE SCHOOL IN PARK HEIGHTS, AS PART OF THE 21ST CENTURY SCHOOL CONSTRUCTION AND REVITALIZATION PROJECT.



^ Pimlico Elementary/Middle School, a renovated 21st Century School in Park Heights, symbolizes the rebirth of the community.

## Northwest Baltimore Partnership

Northwest Baltimore Partnership (NWBP) is a newly formed organization comprising founding members Sinai Hospital, Park Heights Renaissance and CHAI (Comprehensive Housing Assistance, Inc.), along with representatives of Baltimore City and Baltimore County community and government organizations. NWBP aims to increase investment in northwest Baltimore for capital improvements, as well as community and economic development, through public and private sources.

Over the next year, NWBP will address challenging housing conditions in the Central Park Heights, Cylburn and Glen Hills neighborhoods. These areas build upon 21st Century Schools, which are being renovated to provide healthy, inspiring and technology-equipped learning spaces, and function as community hubs and revitalize neighborhoods.

“

A COLLABORATIVE VEHICLE LIKE NWBP IS CRITICAL TO BRINGING ALL THE SKILLS AND ASSETS OF COMMUNITY PARTNERS, LIKE PARK HEIGHTS RENAISSANCE AND CHAI, TO THE TASK OF REVITALIZING OUR NEARBY COMMUNITIES.



**Martha Nathanson**  
VICE PRESIDENT, GOVERNMENT RELATIONS AND COMMUNITY DEVELOPMENT, LIFE BRIDGE HEALTH

## Violence Prevention

“

WE'RE WORKING WITH SAFE STREETS TO BUILD PUBLIC SUPPORT FOR CHANGING COMMUNITY CULTURE SO PEOPLE REJECT VIOLENCE AND SUPPORT PRO-SOCIAL MESSAGING.



**Ademola Ekulona**  
PROGRAM COORDINATOR,  
KUJICHAGULIA CENTER AT SINAI HOSPITAL

Just like any other disease, the best treatment for violence is prevention. A unique partnership between Safe Streets, an anti-violence organization within the Baltimore City Health Department, and Sinai Hospital is working to break the cycle of violence, one person at a time.

When shooting, stabbing and assault victims appear on the patient log at Sinai Hospital, trained hospital responders act immediately. They meet with the victims at their hospital bedsides to discuss the violence intervention program. “The first priority is reducing the likelihood of re-injury and retaliation,” says Anthony Barnes, a hospital responder who works closely with Safe Streets. With the

patient’s permission, they provide information so Safe Streets can help deter retaliation or further violence.

These victims, whether bystanders or gang members, frequently lack education, work experience or a positive living situation. “When a patient is referred to Safe Streets, they can receive workforce development, tutoring, mentorship and warm handoffs to resources that assist with their service care plan,” says Barnes.

Outreach workers affiliated with Safe Streets also interrupt violence by regularly canvassing city neighborhoods, building relationships with at-risk youth and adults, and diffusing potentially violent situations.



> Sinai Hospital hospital responder Anthony Barnes.



^ Many participants in CenteringPregnancy form continuing friendships.

## CenteringPregnancy

CenteringPregnancy, a group prenatal care program offered at Sinai Community Care, gives expectant mothers a more active role in their care and connects medical providers and patients in ways individual care typically doesn't.

Instead of rushing through a 15-minute visit with a patient who is excited and maybe even nervous about her pregnancy, CenteringPregnancy providers spend more than 90 minutes with a small group of patients, reviewing common pregnancy concerns, sharing information about breastfeeding and newborn care, and discussing expectations for labor and delivery.

"Our patients not only receive excellent care; they become empowered over the course of their prenatal care to monitor their health and progress

throughout the pregnancy. Our patients have formed friendships within the group that we hope will continue as their babies grow up together," says Caroline Shell, D.O., director of CenteringPregnancy.

Studies show that moms taking part in the program have healthier babies. CenteringPregnancy has also helped eliminate racial disparities in preterm birth and improve breastfeeding success. More than 50 patients have completed Sinai's program, all of whom have gone on to breastfeed their babies.

"CenteringPregnancy helps you to share feelings with other future moms and to discuss experiences with other moms. I highly recommend it to first-time moms," says Dorcas B., a mother who completed the program.

# 100%

ALL PATIENTS WHO HAVE COMPLETED THE PROGRAM HAVE GONE ON TO BREASTFEED THEIR BABIES.

LifeBridge Health recently announced plans to make Baltimore Child Abuse Center (BCAC), a longtime partner, a part of the system with planned headquarters in the upcoming Sinai Expansion Project development.

BCAC works with Baltimore City officials and medical personnel to develop a coordinated, child-friendly and time-sensitive response to child abuse. "Children who have suffered from trauma are often retraumatized by the length and repetition of the many legal processes and systems that are intended to help them," says Adam Rosenberg, executive director of BCAC.

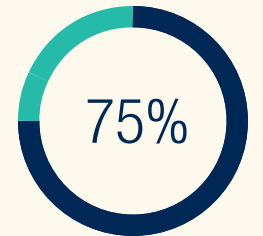
Each year, BCAC provides more than 1,000 children with comprehensive forensic interviews,

medical exams, mental health treatment and any necessary assistance to help them cope with trauma.

"By joining forces with Baltimore Child Abuse Center, we're connecting children and their families to high-quality care and working to stop the cycle of abuse that's negatively impacting communities," says Neil Meltzer, president and CEO of LifeBridge Health.

"As part of LifeBridge Health, we can offer services in both a timely and cost-effective way with staff that are equally as committed to and understanding of our mission as we are," says Rosenberg.

## Helping to Reduce Trauma



75% OF CHILDREN WHO HAD PTSD WHEN THEY STARTED TREATMENT NO LONGER HAD PTSD AT THEIR LAST FOLLOW-UP.

NCTSN Core Data Set Report on Evidence-Based Treatment, February 2018

✓ Adam Rosenberg, executive director of Baltimore Child Abuse Center, plays Connect Four with a young client.

## Baltimore Child Abuse Center

“SUCCESS WITH HEALING CHILDREN REQUIRES A COMPREHENSIVE AND COORDINATED SYSTEM OF CARE FOR EACH CHILD.”



**Adam Rosenberg**  
EXECUTIVE DIRECTOR, BCAC



## Old Court Center

“

EVERYTHING WE DO, EACH PARTNERSHIP AND INVESTMENT WE MAKE, IS ABOUT MAKING OUR COMMUNITY BETTER TODAY THAN IT WAS YESTERDAY.



**Faraaz Yousuf**  
PRESIDENT AND COO,  
NORTHWEST HOSPITAL



LifeBridge Health has been hard at work creating partnerships and making investments intended to rebuild and revitalize the Liberty Road corridor in Randallstown, home to Northwest Hospital.

“In the last 10 years, we’ve modernized the hospital and brought specialty services, surgery centers, and primary and urgent care to the area with the Northwest Professional Center and Liberty Center. Now, we’ve opened the Old Court Center,” says Faraaz Yousuf, president and COO of Northwest Hospital.

The newly constructed 45,000-square-foot Old Court Center is the latest LifeBridge Health initiative

aimed at providing access to care, jobs and other opportunities to community members.

The center houses the Harry and Jeanette Weinberg Center for Aging in Community, home to LifeBridge Health Adult Day Services, a state-of-the-art adult day care; Levindale Outpatient Rehabilitation; and Blackwell-White and Associates Pediatric Medicine. Other tenants include Trinity University, which connects students to opportunities at Northwest Hospital, and Power52, a nonprofit organization that provides employment training in the solar industry for at-risk adults.

### Power52

Power52, co-founded by NFL Hall of Famer Ray Lewis, seeks to break the cycle of poverty, unemployment, underemployment and incarceration in urban communities through economic empowerment and clean energy access.

The Power52 Energy Institute Baltimore City training program enrolls unemployed and at-risk adults in an accredited 11-week training program, which includes wraparound services to ensure that the trainees are successful. Through classroom instruction and paid on-the-job training, Power52 Energy Institute Baltimore City provides OSHA-10 Safety Certification, PV Associate Installer Certification and job placement assistance upon completion.

In addition to job training and placement, Power52 also aims to provide sustainable solutions in low-income communities. In December 2017, it installed solar panels on Living Classrooms’ three community centers in East Baltimore, creating the nation’s first urban community-based resiliency hubs. At these hubs, residents will be able to charge their cellphones and get fresh water, food and other resources during a major emergency or natural disaster.

[Power52.org](http://Power52.org)



Ray Lewis speaks at the opening of the new Power52 headquarters at Old Court Center.



## Clean & Green Team

Achieving and maintaining health goes beyond checkups, medicine and exercise. A good environment is also important to well-being. We need to live, work and play in healthy surroundings every day to thrive physically, psychologically and socially.

That’s why the LifeBridge Health Clean & Green Team, the result of a partnership between LifeBridge Health and Park Heights Renaissance, takes a “rakes on the ground” approach to improving the lives of people and communities. The Clean & Green Team helps people with landscaping,

lawn care, litter removal, painting and minor repairs in Baltimore City, Baltimore County and Carroll County. The team has cleared vacant lots, cleaned up parks and maintained green, safe playing fields for children’s sports leagues.

Clean & Green Team client Shirley Marrow, an 88-year-old Eldersburg, Md., resident, says, “I am thankful that the LifeBridge Health Clean & Green Team can help take care of my yard work. There is no way I could do it, and it helps me out a lot.”

“They got more done in three hours than I could have gotten done in three weeks!”

### Stanley Day

SENIOR CITIZEN LIVING IN WESTMINSTER, MD

“The new Clean & Green Team is a great way for Northwest Hospital and LifeBridge Health to make communities in and around the Liberty Road Corridor stronger and safer. Kudos to LifeBridge Health for creating this unique program.”

### Aaron Plymouth

STEVENSWOOD IMPROVEMENT ASSOCIATION



Baltimore Mayor Catherine Pugh (center) and former LifeBridge Health executive vice president Brian White (center right) with members of the Clean & Green Team.



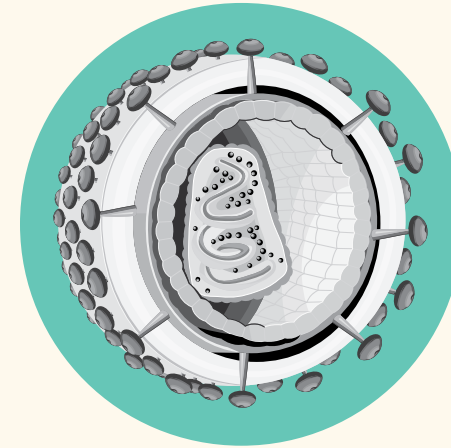
# Innovation

IMPROVING ACCESS TO AND  
QUALITY OF CARE WITH UNMATCHED  
RESEARCH AND TECHNOLOGY



## Discovery Happens Here

By unlocking the secrets of cells, scientists create new ways to diagnose diseases earlier than ever before.



## The LifeBridge Health BioIncubator

The mission of the LifeBridge Health BioIncubator, based at Sinai Hospital, is to improve human health by bringing together emerging businesses, innovative technologies and leading physicians to create breakthrough technology with an entrepreneurial spirit.

The BioIncubator offers startup biotech companies common lab space along with access to industry experts; Sinai's internal review board, the Sinai Hospital Innovation Council; and LifeBridge Health physicians, scientists and patients. It was the only hospital-based bioincubator in Maryland when it launched in 2015. Now, three years later, the BioIncubator has an active waiting list in the double digits.

Taking advantage of its link to LifeBridge Health physicians and patients, BioIncubator partners work on a variety of projects, such

as developing clinical trials that will help patients with a variety of diseases, including HIV, and a device that can detect diseases using particles found in a patient's breath.

Sinai is also in the process of launching a BioIncubator Affiliate Program for companies that do not need physical lab space but would like to have access to the BioIncubator's robust resources.

"The BioIncubator was born out of a strong desire to partner with the most exciting and innovative healthcare startups in our region. This kind of innovation allows our physicians and scientists the opportunity to more rapidly experiment with and implement cutting-edge medical technologies on behalf of patients," says Daniel Durand, M.D., chief innovation officer and vice president of research at LifeBridge Health.

GRANTS  
RECEIVED

14

CUMULATIVE  
FUNDING

\$9.2M

CUMULATIVE  
REVENUE

\$3.5M

## Digital Health

### Ed TeleTriage

2,672

FY2019 (as of March 2019)

1,579

FY2018

Just as digital technology has changed everything from shopping to banking, digital health at LifeBridge Health is revolutionizing the way that patients connect to their care. With secure texts, phone calls, video and internet connectivity, care is convenient, efficient and seamlessly accessible.

LifeBridge Health patients have enthusiastically embraced these tools in a short time. From July to December 2018, 3,175 patients used our enterprise digital health platform. That number is expected to increase to 7,500 by July 2019. In fiscal year 2018, 2,500 LifeBridge Health patients had virtual visits, with 3,500 visits projected for 2019.

In response to this rapid growth, we are always adding features and addressing evolving demands.

“We are continually evaluating new technologies to determine a fit for unmet strategic needs and identifying partnerships that go beyond the traditional vendor-consumer relationship,” says Tressa Springmann, senior vice president and chief information officer of LifeBridge Health.

“

WE ARE CONTINUALLY EVALUATING NEW TECHNOLOGIES TO DETERMINE A FIT FOR UNMET STRATEGIC NEEDS AND IDENTIFYING PARTNERSHIPS THAT GO BEYOND THE TRADITIONAL VENDOR-CONSUMER RELATIONSHIP.



**Tressa Springmann**  
SENIOR VICE PRESIDENT/CIO,  
ENTERPRISE IT AND PROCESS IMPROVEMENT



^ Sarah P., a LifeBridge Health patient, arrives via transportation provided in partnership with Uber Health.

### Digital Health Connections

- APPOINTMENT SCHEDULING
- DAILY REMINDERS
- LIVE 24/7 TELEPHONE SUPPORT
- MEDICAL RECORDS
- PRESCRIPTION REFILLS
- REMOTE MONITORING
- VIRTUAL PHYSICIAN VISIT

### Digital Health Platform Patients

↑ 124%

7,100

2019 PROJECTED

3,175

2018

### Uber Health Rides

16,624

It's a simple solution to a big problem. Each year, millions of Americans miss medical appointments because of a lack of transportation, preventing them from getting the medical care they need. To improve access to care, LifeBridge Health has partnered with Uber Health, which provides safe and convenient rides for patients. We can schedule rides for patients immediately or in advance, and rides are free for up to three months after a hospital stay.



Jonathan Thierman, M.D., Ph.D., consults with a colleague at Northwest Hospital through a video link.

## Virtual Hospital

TELEMEDICINE MAKES IT POSSIBLE FOR A PATIENT'S FIRST INTERACTION TO BE WITH A DOCTOR OR ADVANCED PRACTICE PROVIDER, WHICH ENSURES THAT MORE PATIENTS CAN RECEIVE THE RIGHT CARE AT THE RIGHT TIME.



**Jonathan Thierman, M.D., Ph.D.**  
CHIEF MEDICAL INFORMATION OFFICER,  
LIFE BRIDGE HEALTH

Patients who enter a hospital's emergency department (ED) with urgent health problems shouldn't have to wait to see a doctor, but that's what usually happens.

Long wait times have troubled emergency departments for decades. But thanks to LifeBridge Health's new virtual hospital, waiting times for ED patients at Sinai and Northwest hospitals have drastically decreased.

While nurses triage patients at Sinai's and Northwest's EDs, virtual hospital providers see the patients at the same time through a live two-way video screen.

Providers in the virtual hospital can immediately request and review tests and lab work, see notes made by the nurse and devise a plan of care. The speed and convenience of this technology allows providers to see 60-70 patients a day, resulting in reduced wait times for patients and more timely care.

Additionally, LifeBridge Health Clinical Operations Center, Pulse ambulance service and virtual hospital providers work together to monitor and connect at-risk patients to get the care they need before their conditions worsen and require hospitalization.

## Couplet Care

As part of the \$13.5 million expansion and renovation of The Family Birthplace, Carroll Hospital launched an innovative Neonatal Couplet Care Program.

Developed by the Karolinska Institute in Sweden, couplet care allows babies who are born prematurely or require specialized care to stay with their mothers, instead of being sent to a separate nursery.

"The whole concept of couplet care is that the parents become the caregivers, and the nurses become coaches in that care," says Linda Grogan, executive director of women's, children's and surgical services at Carroll Hospital.

"It reduces the length of stay for the baby, encourages maternal-infant bonding and helps parents feel more comfortable in taking care of the baby," says Grogan.

With most of the construction completed, The Family Birthplace is more than 20,000 square feet and consists of beautifully appointed patient labor and delivery rooms, larger suites for neonatal couplet care, operating suites and a family room for parents staying with their newborns.

### Access Carroll

Carroll Hospital is working to provide greater access to healthcare with Access Carroll, a joint venture between Carroll Hospital, the Carroll County Health Department and The Partnership for a Healthier Carroll County, Inc. Access Carroll is a nonprofit medical home for uninsured and low-income residents of Carroll County. It offers integrated medical, dental, and behavioral health care for Carroll County residents who may be uninsured, underinsured or have public assistance insurances.

Access Carroll's services are offered on a sliding fee scale based on household income and certain eligibility requirements.

WE ARE VERY EXCITED TO OFFER THE NEONATAL COUPLET CARE PROGRAM TO FAMILIES. IT PROVIDES A GREAT COMFORT TO THOSE WHO HAVE BABIES BORN PREMATURELY OR REQUIRE SPECIALIZED CARE.



**Leslie Simmons, RN, FACHE**  
EXECUTIVE VICE PRESIDENT  
PRESIDENT, CARROLL HOSPITAL



# Care Coordination

Being a patient and receiving care can be overwhelming in itself, but many patients also have issues that make accessing care difficult, such as a lack of transportation, being underinsured or challenging home situations. At LifeBridge Health, our coordinated care approach to patient-centered care ensures that our patients have the support and resources they need to get the right care at the right time.

To achieve this coordinated care approach, we have placed community health workers in the Emergency Department to help patients with scheduling and getting to appointments. We have created substance abuse teams with peer recovery specialists to address the ongoing opioid epidemic and have

established a community care coordination program that helps high-risk patients maintain an appropriate level of care by addressing the social determinants of health.

By taking these steps, we have decreased the number of readmissions to both Sinai and Northwest hospitals, which have both ranked in the top three with total rewards from the state for this outcome. Results like these only happen when we continuously place patients at the center of care. Susan Mani, M.D., vice president of clinical transformation of LifeBridge Health, says, "The best outcome is when we hear from patients about our care coordination teams, and we hear this often: "They gave me back my life."

✓ A community health worker meets with a client.



## Clinical Operations Centers

	JERUSALEM	MANILA
AVERAGE DAILY CALL VOLUME	806	740
HOURS AHEAD OF BALTIMORE	7	13

## LifeBridge Health Clinical Operations Centers

Although located many miles away, LifeBridge Health Clinical Operations Centers in Jerusalem, Israel, and Manila, Philippines, benefit patients and providers in Maryland by giving support to LifeBridge Health facilities.

Staffed with nurses and advanced practice providers who are licensed in Maryland, the Israel-based center provides immediate telephone support to patients who have questions, along with follow-up calls to patients upon discharge to see if they need assistance. It also provides services, such as managing prescription refill logistics, that are traditionally handled by on-site clinical staff in Maryland.

LifeLink, the Philippines-based center, provides nonclinical, administrative support, such as scheduling follow-up appointments and transportation.

With these operations centers and our local teams, LifeBridge Health patients can talk with a live person at any time of day or night.

"Being able to speak to a nurse immediately about their concerns makes an incredible difference for our patients and improves efficiencies to provide better access to appropriate care and patient satisfaction," says Kristina Schafer, practice and communications administrator for the Krieger Eye Institute at LifeBridge Health.

“OUR GLOBAL CLINICAL OPERATIONS CENTERS ALLOW LIFEBRIDGE HEALTH TO TAKE ADVANTAGE OF AN INTERNATIONAL WORKFORCE TO MANAGE THE NEEDS OF OUR PATIENTS LOCALLY IN MARYLAND.”



**Jonathan Moles**  
ASSISTANT VICE PRESIDENT OF LIFEBRIDGE HEALTH'S COMMAND CENTER AND ACCESS



# Education

PROVIDING OPPORTUNITIES  
FOR EMPOWERMENT THROUGH  
COLLABORATION AND SCHOLARSHIP



“ BY COMBINING THE STRENGTHS OF LIFE BRIDGE HEALTH AND THE AMERICAN HEART ASSOCIATION THROUGH THE #STRONGERHEARTS INITIATIVE, WE HOPE TO TRANSFORM HOW PEOPLE RECEIVE AND ENGAGE WITH INFORMATION SURROUNDING HEART DISEASE AND STROKE.



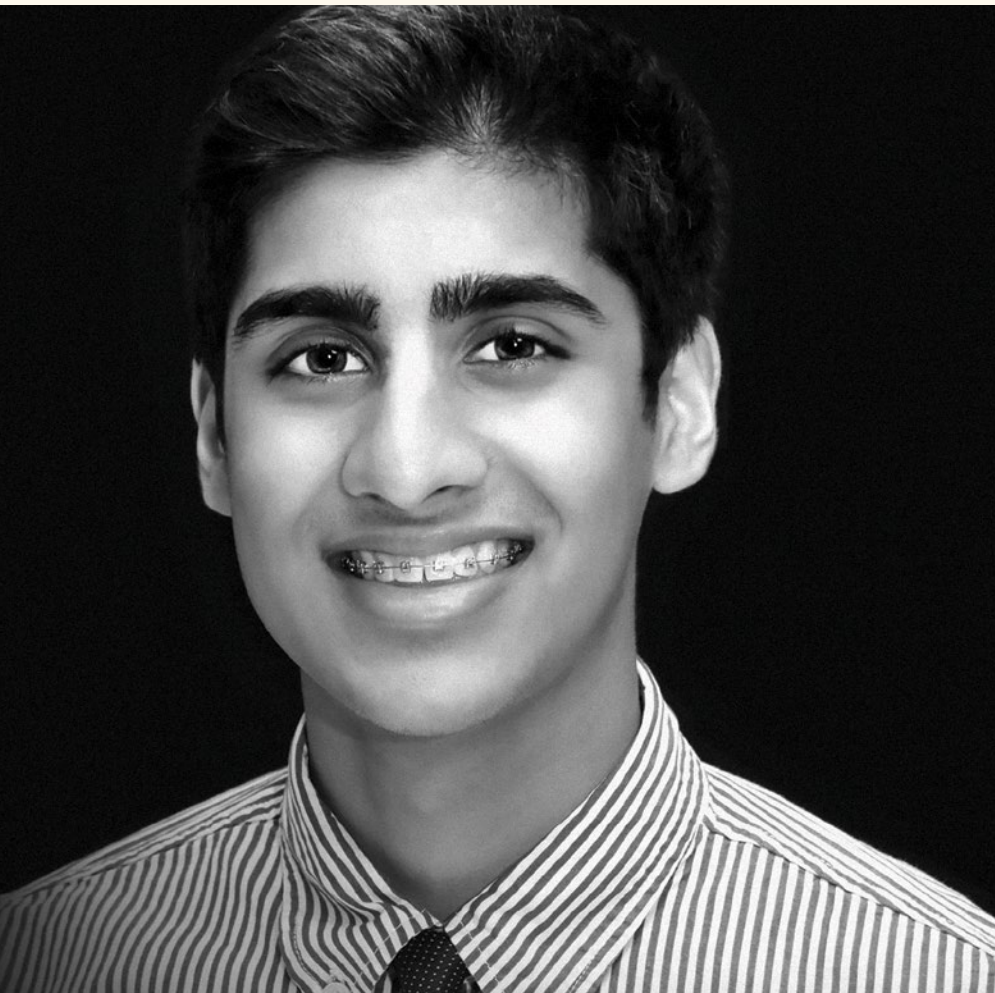
**Neil M. Meltzer**  
PRESIDENT AND CEO,  
LIFE BRIDGE HEALTH



## #StrongerHearts

#StrongerHearts is a unique and innovative collaboration between the American Heart Association (AHA) and LifeBridge Health. Bringing together the resources and medical expertise of both AHA and LifeBridge Health, #StrongerHearts provides easy-to-understand and interactive information about the prevention and treatment of heart disease, the leading cause of death in the United States. At [lifebridgehealth.org/strongerhearts](http://lifebridgehealth.org/strongerhearts), users can find recipes and cooking videos and articles on a vast array of heart-related topics.

The collaboration also includes community events about heart disease, stroke and prevention, such as a World Stroke Day “takeover” of Baltimore’s Graffiti Alley. At the event, community members, physicians and survivors spray-painted messages of support to honor those affected by stroke and raise awareness of stroke, including symptoms, treatment and prevention.



LifeBridge Health/ExpressCare Scholarship recipient Veeraj Shah.

## ExpressCare Scholarship Program

SCHOLARSHIPS AWARDED IN 2018

34

TOTAL AMOUNT AWARDED IN 2018

\$85K

The surest way to create a vibrant future for our communities is investing in the education of young people. In its second year, the LifeBridge Health/ExpressCare Community Scholarship Program awarded 34 scholarships to Maryland high school seniors and college freshmen. The winners submitted essays on the theme “How I Will Use My Education to Give Back to My Community.”

“The scholarship program is the result of the shared vision of LifeBridge Health and ExpressCare to invest in our communities,” says Dave Krajewski, executive vice president and chief financial officer of LifeBridge Health and president of LifeBridge Health Partners, which includes ExpressCare.

“

THROUGH THIS SCHOLARSHIP, WE HOPE TO INSPIRE THE NEXT GENERATION OF HEALTHCARE LEADERS AND MEDICAL PROFESSIONALS.



**Maurice Reid**  
CHIEF EXECUTIVE OFFICER AND  
MEDICAL DIRECTOR OF EXPRESSCARE

One of this year’s winners, Veeraj Shah, is a sophomore at the University of Maryland, College Park and two-time awardee. During his freshman year, Shah, who is in the university’s Integrated Life Sciences Honors program, did research in India and presented his results at two public health conferences. “LifeBridge Health and ExpressCare’s devotion to education and the future has definitely impacted my life for the better,” he says. Quoting Woodrow Wilson, he adds, “There is no higher religion than human service. To work for the common good is the greatest creed.”

## Veteran Hiring and Training

Figuring out how to apply military skills to a civilian career is difficult for many servicemen and women, according to Ralph Jones, director of end-user technology at Sinai Hospital of Baltimore. Jones, who served 20 years in the Marine Corps, says that civilian life is “a different world, a day and night difference.”

Jones, a member of the LifeBridge Health Veterans Council, volunteers at LifeBridge Health hiring fairs to provide a friendly face to veterans who attend. “The biggest thing I do is just talk to people and say, ‘Hey, let me look at your resume,’ and then I try to give them some tips,” says Jones.

“We want to let them know that LifeBridge Health is veteran-friendly,” says Joe Quinn, senior vice president and chief human resources officer at LifeBridge Health and co-chairman of the Veterans Council. Quinn, who is not himself a veteran but has many veteran friends and family members, including his father and two uncles, says, “Through the council’s efforts to recruit and retain retired servicemen and women and support veteran employees, we can give back to our community and show our gratitude to those who have selflessly served our country.”

VETERANS EMPLOYED AT LIFE BRIDGE HEALTH

215

VETERANS HIRED ANNUALLY

~30

“

THE BIGGEST THING I DO IS JUST TALK TO PEOPLE AND SAY, ‘HEY, LET ME LOOK AT YOUR RESUME,’ AND THEN I TRY TO GIVE THEM SOME TIPS.



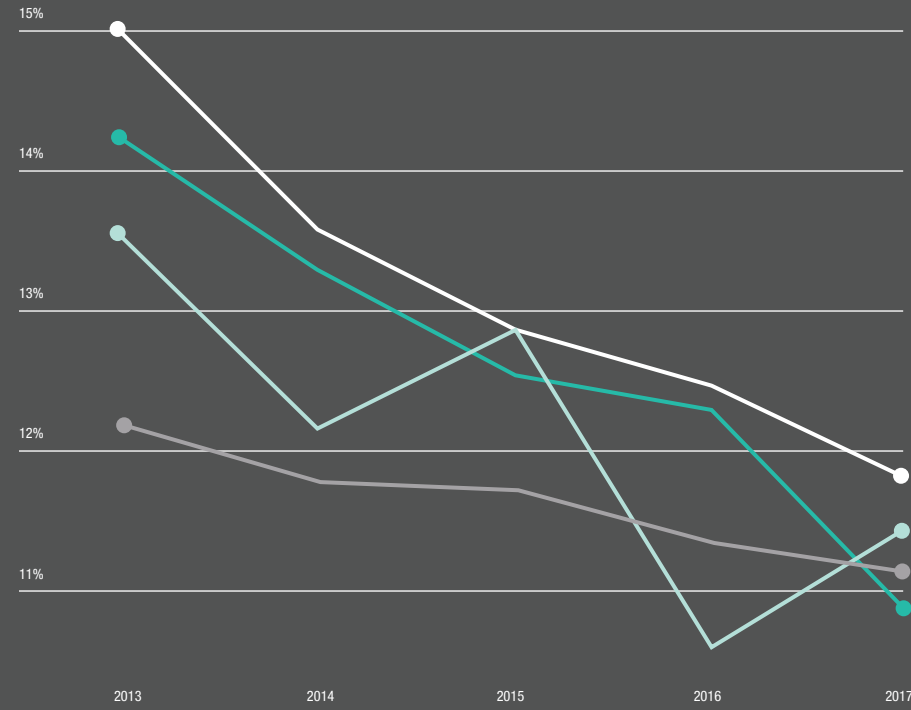
**Ralph Jones**  
DIRECTOR OF END-USER TECHNOLOGY,  
SINAI HOSPITAL



# LifeBridge Health at a Glance

## Health Services Cost Review Commission Readmission Rates

CY2013 - CY2017



### CUMULATIVE IMPROVEMENT RATE

- 23.5% NORTHWEST
- 23.1% LEVINDALE
- 10.4% CARROLL
- 26.8% SINAI



### Employees

13,137

### Physicians<sup>2</sup>

2,687

### Beds

1,934

### Operating Revenue

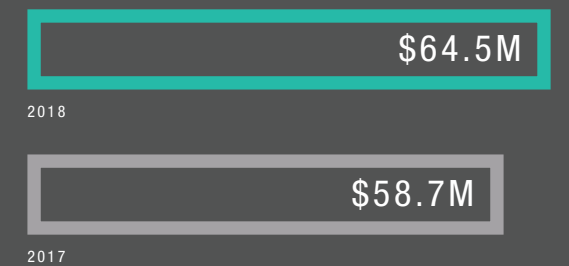
↑ 6%

### Uncompensated Care<sup>3</sup>

↑ 10%

Employees		Physicians <sup>2</sup>	
CARROLL	1,926	SINAI	1,069
LEVINDALE	893	OTHER ENTITIES <sup>1</sup>	241
NORTHWEST	1,746	NORTHWEST	712

Beds	
CARROLL	171
LEVINDALE	330
NORTHWEST	231



1. Includes Community Physician Enterprise and LifeBridge Health Partners  
 2. Total number of credentialed physicians  
 3. Care provided for which compensation is not received, i.e., any combination of bad debts and charity care

# Network of Care

## CARROLL HOSPITAL

### Nationally Accredited Radiation Oncology Services

— American College of Radiology



Carroll Hospital is the heart of its tight-knit community, proudly serving the region for more than five decades. It has grown from a one-building hospital to a comprehensive patient-centered medical campus. The hospital offers nationally ranked care, the latest in medical technology and skilled clinicians in a variety of specialties. Carroll continues to expand its programs and services with the upcoming innovative Neonatal Couplet Care program, along with community outreach activities, comprehensive outpatient services and the construction of a health and rehabilitation care center on campus.

“CONNECTING WITH THE STAFF ENERGIZES ME AND REMINDS ME TO GO ABOVE AND BEYOND EVERY DAY. I WANT TO REMOVE ANY OBSTACLES AND MAKE IT BETTER FOR THOSE WHO ARE TAKING CARE OF OUR PATIENTS.”



**Leslie Simmons, RN, FACHE**  
PRESIDENT

#### SELECT MEDICAL SERVICES

- Behavioral Health
- Carroll Hospice
- Minimally Invasive and Advanced Surgical Care
- Orthopedics and Sports Medicine
- Tevis Center for Wellness
- William E. Kahlert Regional Cancer Center
- Women and Children

## LEVINDALE HEBREW HOSPITAL AND NURSING CENTER

### Groundbreaking Post-Acute Care



Levindale Hebrew Hospital and Nursing Center, founded in 1890, leads the way in complex medical care, including a successful pulmonary and vent weaning program. Additionally, Levindale has a nationally accredited rehabilitation program, three outpatient rehabilitation centers and an acute neuro-cognitive unit with an outpatient program. Grounded in the Eden Alternative philosophy of person-directed care, Levindale provides a complete continuum of care, incorporating a community-focused nursing center, a skilled nursing floor and an adult day services program.

“WE CONNECT OUR PATIENT CARE TO EXCELLENT OUTCOMES BY PROVIDING EXTRAORDINARY CARE THAT REFLECTS THE VALUE OF EACH OF OUR TEAM MEMBERS AS THEY BRING HOPE, HEALING AND RECOVERY TO OUR PATIENTS.”



**Deborah Graves**  
PRESIDENT AND COO

#### SELECT MEDICAL SERVICES

- Acute Rehabilitation
- Adult Day Services
- Behavioral Health Unit
- Critical and Long-Term Care
- High Intensity Care Unit
- Households at Levindale
- Specialized Pulmonary Care Services and Vent Weaning

## NORTHWEST HOSPITAL

### OR Excellence Award for Staff Safety

— Outpatient Surgery Magazine



Northwest Hospital, a nonprofit hospital with 231 beds, has served the northwest Baltimore community for more than 50 years. With a patient-friendly design and impressive array of specialties, the hospital provides patient-centered care with an emphasis on quality and safety. Going beyond the expected, Northwest has recently earned top honors for several innovative safety initiatives. To bring care into the community, Northwest has built nearby facilities that offer convenient services such as outpatient surgery, adult day services and physical rehabilitation.

“WE PRIDE OURSELVES ON GIVING PATIENTS THE BEST AND MOST COMPASSIONATE CARE POSSIBLE WHILE CONSISTENTLY MEETING AND EXCEEDING HEALTHCARE INDUSTRY MEASURES.”



**Faraaz Yousuf**  
PRESIDENT AND COO

#### SELECT MEDICAL SERVICES

- Behavioral Health
- Herman & Walter Samuelson Breast Care Center
- Krieger Eye Institute
- Minimally Invasive and Robotic Surgery
- Rubin Institute for Advanced Orthopedics
- Sandra and Malcolm Berman Brain & Spine Institute
- Sub-Acute Care

## SINAI HOSPITAL OF BALTIMORE

### Get With The Guidelines-Stroke Gold Plus Recognition

— American Heart Association/American Stroke Association



Sinai Hospital of Baltimore was founded in 1866 as a 10-room hospital to answer the needs of Jewish patients and doctors. Today, Sinai continues that spirit of invention and inclusion. The hospital continues to break ground with patient-centered medical care and innovative research. Sinai’s renowned Centers of Excellence provide specialized, advanced care by teams of experts. Additionally the LifeBridge Health BioIncubator, based at Sinai Hospital, gives emerging biotech and health sciences companies lab space and access to leading physicians.

“AT OUR CORE, IT’S ABOUT ALL OF US WORKING TOGETHER TO PRODUCE THE BEST EXPERIENCE FOR OUR PATIENTS AND ENSURE WE’RE COLLABORATING TO DELIVER OUTSTANDING, COMPASSIONATE CARE.”



**Jonathan Ringo, M.D.**  
PRESIDENT AND COO

#### SELECT MEDICAL SERVICES

- Alvin & Lois Lapidus Cancer Institute
- Herman & Walter Samuelson Children’s Hospital
- Krieger Eye Institute
- LifeBridge Health Cardiovascular Institute
- Rubin Institute for Advanced Orthopedics
- Sandra and Malcolm Berman Brain & Spine Institute
- Sinai Rehabilitation Center



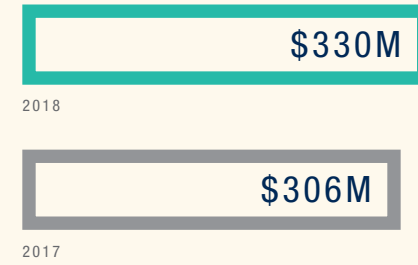
# LifeBridge Health Partners

Because the future of healthcare is growing beyond the walls of the traditional hospital setting, LifeBridge Health has chosen to partner with other health-related service companies throughout the region. “By expanding relationships with care providers, LifeBridge Health can offer patients a full continuum of care, from health and wellness to hospice care,” says David Krajewski, president of LifeBridge Health Partners, and executive vice president and chief financial officer of LifeBridge Health.



**David H. Krajewski**  
EXECUTIVE VICE PRESIDENT AND CFO,  
LIFE BRIDGE HEALTH  
PRESIDENT, LIFE BRIDGE HEALTH PARTNERS

## LBH Partners Total Revenue



### Care at Home

HomeCare Maryland is a Medicare-certified and Joint Commission-accredited home health agency that provides compassionate, skilled health services to patients in Baltimore City and Baltimore, Carroll, Cecil, Harford and Frederick counties. Services include nursing care; physical, occupational and speech therapy; social work; and nutritional and behavioral health support.

The newest addition to LifeBridge Health Partners, Avila Home Care provides a full range of private duty services, including companion and personal care, meal preparations, and supportive services like light housekeeping and pet care.

For patients requiring infusion therapies, Nation's Home Infusion can ensure patients receive the equipment and supplies they need to manage their care safely and effectively at home.

When support is needed to manage respiratory and other medical conditions at home, National Respiratory Care and Anchor Pharmacy can deliver equipment and supplies right to patients' homes, including oxygen, ventilators, BiPAPs, CPAPs, and other ventilation and breathing devices.

### Rehabilitation and Skilled Nursing

FutureCare, a leader in short-term rehabilitation and skilled nursing care throughout Maryland, and Brinton Woods Health and Rehabilitation Center at Winfield, a CMS five-star rated facility, meet the needs of both long-term and short-stay residents by providing individualized care plans that help patients achieve the highest level of functional capacity.

### Senior Living

With a brand-new independent community, Springwell Senior Living features the very best for active seniors, along with memory care, in a beautiful, warm environment.

### Hospice

Providing in-home care in Baltimore, Carroll and Frederick counties and inpatient care at its Dove House in Westminster, Carroll Hospice is dedicated to enhancing the quality of life for patients with life-limiting illnesses and their families.

### Outpatient Pharmacy Services

The outpatient pharmacies at Carroll, Northwest and Sinai hospitals serve the prescription medication needs of LifeBridge Health's patients, employees, physicians and community members.

### Urgent Care

ExpressCare, Maryland's fastest-growing urgent care company, is open seven days a week from 8 a.m. to 9 p.m., treating minor illnesses and injuries. Walk in or skip the wait by using its convenient online appointment system.

### Radiology

Advanced Radiology and Community Radiology Associates offer the latest innovations in medical imaging, including 3T MRI, 3-D mammography, ultrasound and PET/CT, to patients in Baltimore and Carroll counties.

### Occupational Health

Carroll Occupational Health specializes in managing employment-related healthcare needs, including injury management and employee physicals, under one roof.

### Ambulatory Surgery Centers

LifeBridge Health's ambulatory surgery centers, conveniently located in Owings Mills and Ellicott City, provide same-day surgical care, including diagnostic and preventive procedures.

### Outreach Labs

LifeBridge Health's outreach laboratory services centers are located throughout Maryland, including Baltimore City and Baltimore, Harford, Cecil, Carroll, Anne Arundel and Prince George's counties.

### Kidney Care

DaVita Kidney Care delivers dialysis services to patients with chronic kidney failure and end stage renal disease.

### Medical Transportation

When patients need emergency or basic stretcher or wheelchair transportation to or from any LifeBridge Health facility,

Pulse Medical Transportation's team of paramedics, critical care nurses and skilled drivers is available 24 hours a day, seven days a week.

### VSP

VSP Business Support Services offers digital printing, wide-format printing, mailing and document management.

### Sleep Centers

The LifeBridge Health Sleep Centers specialize in the diagnosis and treatment of sleep disorders in adult and pediatric patients.

### Digestive Disease Center

The Carroll County Digestive Disease Center provides patients a safe and convenient setting for diagnostic procedures, including colonoscopy, sigmoidoscopy and upper endoscopy.

### Eye Care & Optical Shops

The Krieger Eye Institute at Sinai and Northwest hospitals and Quarry Lake are renowned for a superior patient experience, offering high-quality, specialty and routine ophthalmologic care, as well as two full-service retail shops with a wide selection of frames, sunglasses and readers.

### Fitness and Wellness

One of the nation's top 100 health clubs, LifeBridge Health & Fitness offers a full slate of group classes, personal training sessions, an indoor pool and massage, acupuncture, and laser services.

### Billing and Coding Services

The billing specialists at Practice Dynamics (PDI) perform a full range of comprehensive billing, coding and compliance services for more than 600 LifeBridge Health providers.

### The Shops at LifeBridge Health

Our gift shops at Sinai, Northwest and Carroll hospitals stock a variety of items for patients, family and friends. Subway at Sinai Hospital offers many healthy meal options.

### Rehabilitation Services

With 24 outpatient locations around Baltimore, plus locations at Sinai, Carroll and Northwest hospitals, LifeBridge Health Rehabilitation Services provides convenient access to physical and occupational therapy and other clinical services.

# Community Partners

When we join forces with other organizations, we tap into the power of partnership and amplify our ability to make the world better.

## CIVIC WORKS



Civic Works is Baltimore's urban service corps and an AmeriCorps program. Its mission is to strengthen Baltimore's communities through job training and volunteerism. Civic Works changes lives every day through education, skills development and community service.

[civicworks.com](http://civicworks.com)



## CHAI

(COMPREHENSIVE HOUSING ASSISTANCE, INC.)

CHAI (Comprehensive Housing Assistance, Inc.) works to develop and support thriving, stable communities in neighborhoods with a substantial Jewish population through housing services and loans, community development, and senior services.

[chaibaltimore.org](http://chaibaltimore.org)

## PARK HEIGHTS RENAISSANCE

Park Heights Renaissance is working to shape a better future in Park Heights. Its community-based plan seeks to create a thriving and sustainable community with land, economic and human development, including a massive redevelopment in the Park Heights community.

[holdnewheights.org](http://holdnewheights.org)



## MARYLAND DEPARTMENT OF HOUSING AND COMMUNITY DEVELOPMENT

The Maryland Department of Housing and Community Development supports livable, dynamic and sustainable communities throughout the state, with a range of programs and financing tools that help Marylanders build and maintain homes, businesses and communities.

[dhcd.maryland.gov](http://dhcd.maryland.gov)



# 70

## Community Partners

- ACCESS CARROLL
- ALPHA KAPPA ALPHA SORORITY INC.
- AMERICAN DIABETES ASSOCIATION
- AMERICAN HEART ASSOCIATION
- AMERICAN HOSPITAL ASSOCIATION
- AMERICAN LUNG ASSOCIATION
- AMERICAN RED CROSS
- AMERICAN STROKE ASSOCIATION
- ARLINGTON ELEMENTARY MIDDLE SCHOOL
- THE ASSOCIATED JEWISH COMMUNITY FEDERATION OF BALTIMORE
- BALTIMORE CHILD ABUSE CENTER
- BALTIMORE CITY BOARD OF EDUCATION
- BALTIMORE CITY CARDIOVASCULAR DISEASE TASK FORCE
- BALTIMORE CITY COMMUNITY COLLEGE
- BALTIMORE CITY DEPARTMENT OF RECREATION AND PARKS
- BALTIMORE CITY DEPARTMENT OF AGING
- BALTIMORE CITY DEPARTMENT OF PLANNING
- BALTIMORE CITY HEAD START PROGRAM, ST. VINCENT DEPAUL OF BALTIMORE
- BALTIMORE CITY HEALTH DEPARTMENT
- BALTIMORE CITY POLICE DEPARTMENT, NORTHWEST DIVISION
- BALTIMORE COUNTY DEPARTMENT OF HEALTH AND HUMAN SERVICES
- CALLAWAY ELEMENTARY MIDDLE SCHOOL
- CENTER FOR A LIVABLE FUTURE
- CHAI (COMPREHENSIVE HOUSING ASSISTANCE, INC.)

## HEALTHY NEIGHBORHOODS



Healthy Neighborhoods, a nonprofit organization founded in 2004, helps strong but undervalued Baltimore neighborhoods increase home values, market their communities, create high standards for property improvements and forge strong connections among neighbors.

[healthyneighborhoods.org](http://healthyneighborhoods.org)

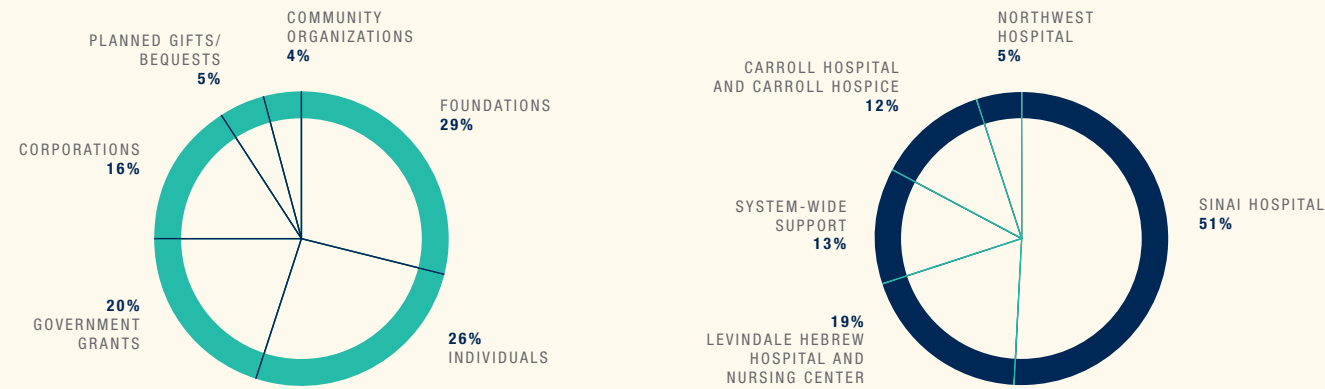
- CHANA
- CHASE BREXTON HEALTH SERVICES
- CREATIVE CITY CHARTER SCHOOL
- CRISP (CHESAPEAKE REGIONAL INFORMATION SYSTEM FOR OUR PATIENTS)
- DELTA SIGMA THETA SORORITY, INC.
- FAMILY LEAGUE OF BALTIMORE
- FOREST PARK SENIOR CENTER
- GOVERNOR'S OFFICE OF CRIME CONTROL AND PREVENTION
- HEALTH CARE WITHOUT HARM
- HEALTHCARE ACCESS MARYLAND (HCAM)
- HEALTHY FAMILIES AMERICA
- HEALTHY NEIGHBORHOODS, INC.
- JANE ADDAMS RESOURCE CORPORATION (JARC)
- JEWISH COMMUNITY CENTER OF GREATER BALTIMORE
- JEWISH COMMUNITY SERVICES OF BALTIMORE
- JOHNS HOPKINS SCHOOL OF PUBLIC HEALTH
- JOHNS HOPKINS HOSPITAL, FACULTY PRACTICE HEMATOLOGY ONCOLOGY
- KIPP HARMONY
- KIPP UJIMA
- MARYLAND CITIZENS' HEALTH INITIATIVE: HEALTHCARE FOR ALL
- MARYLAND DEPARTMENT OF HEALTH AND MENTAL HYGIENE
- MARYLAND DEPARTMENT OF HEALTH AND MENTAL HYGIENE-OFFICE OF MINORITY HEALTH AND HEALTH DISPARITIES
- MARYLAND FARMERS MARKET ALLIANCE

- MARYLAND HEALTH CONNECTION
- MAYOR'S OFFICE OF EMPLOYMENT & DEVELOPMENT
- MORGAN STATE UNIVERSITY SCHOOL OF PUBLIC HEALTH
- MY BROTHER'S KEEPER
- NEIGHBORHOODS UNITED
- NORTH AMERICAN TRADE SCHOOLS
- PARK HEIGHTS COMMUNITY HEALTH ALLIANCE (PHCHA)
- PARK HEIGHTS FAMILY SUPPORT CENTER
- PARK HEIGHTS RENAISSANCE
- PHI BETA SIGMA FRATERNITY, INC.
- PIMLICO ELEMENTARY/MIDDLE SCHOOL
- SAFE STREETS
- SHOPRITE HOWARD PARK
- SISTERS SAVING THE CITY
- SOUTH BALTIMORE LEARNING CENTER
- UNITED WAY
- UNIVERSITY OF MARYLAND HOROWITZ CENTER OF HEALTH LITERACY
- WEST BALTIMORE CARES
- WHOLESOME WAVE
- WINFIELD ELEMENTARY SCHOOL
- YMCA OF CENTRAL MARYLAND
- ZETA CENTER FOR HEALTHY AND ACTIVE AGING
- ZETA PHI BETA SORORITY, INC.

# CARE BRAVELY

## Changing Lives Through Philanthropy

### The Year in Review



A total of \$22,159,684 was received in new gifts and pledges for the fiscal year ending June 30, 2018. Shown here: sources of the extraordinary support given to Sinai Hospital, Northwest Hospital, Carroll Hospital, Carroll Hospice, and Levindale Hebrew Hospital and Nursing Center.

Philanthropic support makes a tremendous difference throughout the health system. Shown here: how donors directed their gifts during fiscal year 2018.



J. Mark Schapiro honored his father, Marvin Schapiro, with a generous gift to Levindale. Marvin Schapiro was the founder of Continental Realty, a Jewish community leader and Levindale board chair from 1970 to 1971. The Schapiro family has been involved with Levindale for more than 100 years.



The 10th Anniversary Magic of Life Gala celebration in March 2018 at the Meyerhoff Symphony Hall raised nearly \$3.8 million in unrestricted support of LifeBridge Health programs and services. From left: Stephanie Attman; Ron Attman, Northwest Hospital board member and Gala co-chair; and Lynn Abeshouse, LifeBridge Health board member, Development Committee chair and Gala co-chair.

Your generous financial support allows us to change the lives of the individuals and communities we serve through compassionate, high-quality care, community outreach and opportunities for innovation. We are honored that you trust us with your gifts. When you give bravely, you inspire us to care bravely.

LifeBridge Health is pleased and honored to recognize the donors of \$10,000 and above who made gifts to our Circle of Life Society (Visionary, Cornerstone and Steward levels) in support of any LifeBridge Health affiliate – Sinai Hospital, Northwest Hospital, Carroll Hospital, Carroll Hospice, and Levindale Hebrew Hospital and Nursing Center – from July 1, 2017, to June 30, 2018.

### Visionary Level

\$100,000+

- Anonymous (1)
- Baltimore City Mayor's Office of Employment Development
- The Baltimore Sun Media Group
- Behavioral Health Systems Baltimore (BHSB)
- Sandra and Malcolm Berman
- Estate of Julia Berwager
- Carroll Hospital Auxiliary
- Cerner Corporation
- Chesapeake Employers' Insurance Company
- Ben and Zelda Cohen Charitable Foundation, Inc.
- Rosalee and Dick Davison
- Charlotte Weinberg
- Estates of Hugo and Helen Dalsheimer
- Dr. and Mrs. Raphael David
- Estate of Liebe S. Diamond, M.D.
- ExpressCare Urgent Care Centers
- Family League of Baltimore City
- The Beverly K. Fine & Jerome M. Fine Foundation, Inc.
- France-Merrick Foundation
- Phyllis and Louis Friedman
- Brian and Martha Gibbons
- Estate of Slova Gisner
- Lowell and Harriet Glazer Family Philanthropic Fund
- The Family of Sol Goldstein
- Donald Goldstein
- Mark Goldstein
- Robert Goldstein
- Gottschalk Foundation
- Governor's Office of Crime Control and Prevention
- Greenberg Gibbons Commercial
- Greenebaum Enterprises, Inc.
- Mr. and Mrs. Michael I. Greenebaum

- The Stewart and Marlene Greenebaum Family Foundation
- Ralph C. Heller Foundation
- Hill Development Group, LLC
- Hope for Henry Foundation
- Kahlert Foundation
- Greg and Roberta Kahlert
- Committee for Kamenetz
- Zanvyl and Isabelle Krieger Fund
- Alvin and Lois Lapidus
- Harry & Betty Lichtman Gift Fund
- M&T Bank
- Maryland Department of Health and Mental Hygiene
- Maryland Technology Development Corporation (TEDCO)
- National Institutes of Health (NIH)
- Northwest Hospital Auxiliary
- Paul S. Pariser Foundation
- Dr. Jerome P. and Susan B. Reichmister
- Milton Roberts Trust
- Stanley F. and Jane Rodbell
- Herman & Walter Samuelson Foundation
- Lorraine and J. Mark Schapiro
- Margaret D. and Benjamin S. Schapiro
- S.H. Tevis & Son, Inc.
- Beth and Jack Tevis
- Edward N. and Della L. Thome Memorial Foundation
- U.S. Department of Health and Human Services
- U.S. Department of Transportation/Maryland Transit Administration
- United Way of Central Maryland
- Ellen W.P. Wasserman
- The Harry and Jeanette Weinberg Foundation
- Whiting-Turner Contracting Company
- Phyllis and Donald Zimmerman

### Cornerstone Level

\$25,000-\$99,999

- Anonymous (2)
- The Abeshouse Tark Family
- Advanced Radiology
- Alex Cooper Auctioneers, Inc.
- Allegis Global Solutions
- Ruth Bair
- Bank of America Merrill Lynch
- BB&T Corporation
- Berkeley Research Group, LLC
- The Blavatt Family
- Leonor and Marc Blum
- Bolder Healthcare Solutions
- Kim Kelly Burden Foundation
- The Campbell Foundation
- Jane W. Campbell Trust
- Capitol Office Solutions
- Carroll County Anesthesia Associates, P.A.
- Andrew Green, M.D.
- Kiran Kuma, M.D.
- Jeffrey Tabak, M.D.
- John Brock, M.D.
- Diana Eclavea, M.D.
- David Kottra, D.O.
- Angelo Caprarella, M.D.
- Celaïne So, M.D.
- Matthew Crutchley, M.D.
- Jessica Hobbs, M.D.
- Cigna
- The Classic Catering People
- Estate of Howard Cobry
- Joseph and Annette Cooper and Family
- Lee E. Coplan
- Eric W. Cowan
- Crothall Healthcare Inc.
- The Daily Record
- Michael and Anselia Dopkin and Family
- Mr. and Mrs. Steven B. Fader
- Samuel M. Feldman

- Jack Finkelstein and Frances Kessler
- The Footlick Family Foundation
- Robert\* and Ronnie Footlick
- Leslie and Joseph Schaller
- Randi and Frank Settleman
- Mr. Bob and Mrs. Linda Frazee
- James and Carolyn Frenkil
- Charitable Foundation
- Edward J. Friedman Foundation, Inc.
- Lorraine and Barry Friner
- Dennis Glasgow
- Louise K. Goodman
- LaVerna Hahn Charitable Trust
- Phebe Hess Trust
- Drs. Hicken, Cranley and Taylor P.A.
- Hord Coplan Macht, Inc.
- Hughes Trash Removal, Inc.
- Ms. Sandra Hughes and Mr. Jeff Taylor
- Ms. Doris J. Hull
- Morton Hutzler Trust
- Drs. Alfonso Janoski and Judith Janoski
- Kaufman Fund
- Mr. and Mrs. Leo Kelly III
- Anna and Daniel Klein
- Jennifer and Michael Klein
- The Philip and Harriet Klein Foundation, Inc.
- Maryland Affiliate of Susan G. Komen Breast Cancer Foundation
- KPMG, LLP
- KWM Cares
- Levindale Auxiliary
- Susan and Jon Levinson
- Mangione Family Foundation
- The Herman Maril Foundation
- Dr. and Mrs. Samuel Matz
- MCVcares, Inc.
- Metz Culinary Management
- Marilyn Meyerhoff
- Moser Family Fund

- Mr. and Mrs. E. Alexander Myers
- NAPA
- NIH Subaward from Johns Hopkins
- Claude Pepper Center
- National Respiratory Care, LLC
- Nurses Alumnae Association of Sinai Hospital
- Obrecht Properties, LLC
- Carol and Thomas Obrecht
- Owens & Minor, Inc.
- Patient Centered Outcomes Research Institute – Medical University of South Carolina Subaward
- Beverly Penn
- Anne Louise and Howard Perlow
- PNC Bank
- Residential Title & Escrow Company / Commercial Settlement Services, LLC
- Rolyn Companies, Inc.
- Bruce L. Rosenberg
- Irene and Robert Russel
- Kathy and Sanford Shapiro
- Sinai Mitzvah Foundation
- James M. Smith and Family
- Staples Advantage
- Lisa and Barry Stoler
- Roslyn and Leonard Stoler
- Stryker Orthopaedics
- Sturgill & Associates, LLP
- Tracy's Kids Art Therapy Program
- US Acute Care Solutions
- Estate of Darcy Lyn Vice
- Mr. and Mrs. Donn A. Weinberg
- Willis Towers Watson
- Woodholme Gastroenterology Associates, P.A.
- Saul Zaentz Foundation
- Dr. and Mrs. Thomas J. Zirpoli

### Steward Level

\$10,000-\$24,999

- Dr. Sondra G. Abrams
- ACME Paper & Supply Co., Inc.
- Mildred and Edward Attman\*
- Ronald and Stephanie Attman
- David Attman
- Patricia and Gary Attman
- Steven and Lisa Attman
- Mr. and Mrs. Richard M. Alter
- American Endowment Foundation
- American Office
- Lisa and David Kuntz
- Debbie and Michael Kuntz
- Anchor Pharmacy/Carroll Care Pharmacies
- Drs. James and Jeanie Miller
- The Phyllis L. and Leonard J. Attman Foundation, Inc.
- Baltimore Alliance for Careers in Healthcare
- Baltimore Integration Partnership
- Baltimore Women's Giving Circle
- Barcoding, Inc.
- Jay Steinmetz
- Mr. Wayne and Mrs. Bonnie Barnes
- Barnes-Bollinger Insurance Services
- Mr. and Mrs. David Bollinger
- Mr. and Mrs. Mark Bollinger
- Baudino Law Group, PLC
- Baughier Enterprises, Inc.
- Harriet and Jimmy Berg
- Laura Black and Charles Klein
- R. D. Bowman & Sons, Inc.
- Mr. and Mrs. Dale Bowman
- Mr. and Mrs. Dirk R. Bowman
- Bridge-Gate
- Brown Capital Management
- Carroll Land Services, Inc.
- Chason, Rosner, Leary & Marshall, LLC
- Chesapeake Contracting Group

- Children's Cancer Foundation, Inc.
- Cognizant
- Community Foundation of Carroll County, Inc.
- Connection Enterprise
- Continental Realty Corporation
- The Schapiro Family
- J.M. and Mindy Schapiro
- The Cordish Family Foundation, Inc.
- Mr. Scott and Mrs. Amber Curtis
- Muriel G. Davidson
- Richard and Rosalee C. Davison
- Foundation, Inc.
- Devaney & Associates, Inc.
- Diane Devaney and David Dekowski
- DRP Construction
- Harry F. Duncan Foundation, Inc.
- Mr. and Mrs. R. Clayton Emory
- The Exeter Wealth Management Group at Morgan Stanley
- Jonathan and Robin Davidov
- R. Wayne Feezer Memorial Foundation, Inc.
- Floors Etc.
- FutureCare
- The Jennifer Gandel Kachura Foundation
- Barry Garber and Michele Lax
- Georgia-Pacific Professional
- Mr. P. Douglas and Mrs. Christine A. Gerstmyer
- Nancy and Marc Gertner, M.D.
- Lyn Stacie Getz Foundation, Inc.
- Karen and Ronald Ginsberg, M.D.
- Gobel Group
- William O. Goldstein Fund
- Goodell, DeVries, Leech and Dann, LLP
- Estate of Alice K. Goodman
- Goodman-Gable-Gould / Adjusters International
- Gordon Feinblatt, LLC
- Samuel G. and Margaret A. Gorn Foundation

# Community Partners



The McKissock family has raised more than \$85,000 for Sinai with its yearly VolleyforTBI tournament, in gratitude for Dave's successful treatment for a traumatic brain injury at Sinai Hospital. From left: Hunter, Denise, Dave, Taylor and Austin McKissock, and Austin's fiancée Kerry Calnan.



The late Mary Tilbury, Ed.D., RN, NEA-BC, sponsored the annual Distinguished Nursing Lecture at Sinai Hospital. Dr. Tilbury was a national leader in nursing administration education and a Sinai Hospital board member. Sinai Hospital President and COO Jonathan Ringo says, "The endowed lecture is truly a part of her legacy."

Vaughn Greene Funeral Services, P.A.  
Bill Miller  
Healthcare Legal Solutions, LLC  
Moses S. and Blanche H. Hecht Foundation  
Eileen and Donald Himelfarb  
David & Barbara B. Hirschhorn Foundation, Inc.  
Gina and Daniel Hirschhorn  
HobbleJog Foundation  
HomeCare Maryland  
Hospital Support Services  
Benno & Elayne Hurwitz Family Foundation, Inc.  
IBM Corporation  
Jalopyrama Hot Rod Show  
Jmore  
Johnson Controls, Inc.  
Leah & Morton Kemper Family Foundation  
Louise and Richard Kemper  
Klein Enterprises  
Adam Michael Kodeck Fund  
Mr. and Mrs. James G. Kohler  
Koons Toyota of Westminster  
Korn Ferry  
David, Jessica, Kelsey, Joe and Charlye Krajewski  
Dr. Flavio and Mrs. Ellie Kruter LabCorp  
Lazarus Lutheran Church  
Leach Wallace Associates, Inc.  
Legg Mason & Co.  
Lehigh Cement Company  
Mr. Shmaya Leviev  
Stacey and Barry Levin, Esquire  
Audrey P. Levine  
Julie and Andrew Levine  
Libman Family Foundation, Inc.  
London Eligibility, Inc.  
Fred S. London and Scott S. London

The Herman and Seena Lubcher Charitable Foundation  
Ms. Terri Lyons and Mr. Steve King  
The Mackenzie Companies  
The Louise D. & Morton J. Macks Family Foundation, Inc.  
Louise D. and Morton J.\* Macks  
Martha Macks-Kahn and Peter Kahn, M.D.  
Genine M. and Josh E. Fidler  
Ellen A. and Lawrence Macks  
Brenda W. Mandel and Louis B. Frock  
March of Dimes, Maryland Chapter  
McBee Associates, Inc.  
C.L. McCoy Framing  
Christopher and LaDawn McCoy  
Mr. Joseph B. McNeely and Mrs. Patricia Massey  
Media Works, LTD  
Jody Berg  
Medline Industries, Inc.  
MEDNAX  
Ellen & Neil Meltzer Family Fund  
The Meltzer Group  
Alan L. Meltzer  
Merritt Properties  
Miles & Stockbridge, P.C.  
Sandra and Brian Moffet  
Networking Concepts, Inc.  
NICU Parent's Council  
Bags and Bangles for Babies Bingo  
Northwest Hospital Medical Staff  
Number Ten Foundation  
OrthoMaryland  
OrthoPediatrics  
Passen Enterprises, LLC.  
Amy and Martin Passen, M.D.  
Selvin Passen, M.D.  
Pinnacle Health Group, LLC  
Pivot Physical Therapy  
Cheryl A. and Robert J. Post  
T. Rowe Price Foundation, Inc.

Priority 1 Automotive Group  
Deborah and Louis Cohen  
Jamie and Marc Cohen  
William E. Proudford Sickle Cell Fund, Inc.  
Pulse Medical Transportation  
Jennifer\* and Tom Quinn  
R. Wayne Barnes, CLU, CLTC, Life & Long Term Care Insurance  
Radcliffe Jewelers  
Raymond James Associates  
RCM&D, Inc.  
Tsiipi and Michael Renbaum  
RIOA – Center for Joint Preservation and Replacement  
RIOA – International Center for Limb Lengthening  
Mr. Dwayne and Mrs. Wanda Richardson  
Sharri and Greg Rochlin  
Dr. and Mrs. Jed S. Rosen  
Rosenthal-Statter Foundation, Inc.  
Saul Ewing, LLP  
Saval Foods Corporation  
Ellen and Paul Saval  
SC&H Group, LLC  
Mr. Ronald Causey  
Schafer Cullen Capital Management, Inc.  
Drs. Schuster & Schreiber  
Seasons Hospice  
SGW Integrated Marketing Communications  
Shade Construction Company, Inc.  
Hanan & Carole Sibel Family Foundation, Inc.  
Greg and Leslie Simmons  
Sinai Department of Obstetrics and Gynecology  
Sinai Department of Physical Medicine and Rehabilitation  
The Medical Staff of Sinai Hospital

Jackie and Bob Smelkinson  
Mr. Mark S. and Mrs. Teresa D. Snyder  
Springwell Senior Living  
St. John Properties, Inc.  
Estate of Grace M. Sterger  
Stevenson University  
Mr. Timothy and Mrs. Jennifer Stitely  
Strategic Factory  
Dr. George H. and Mrs. Betty Thomas  
Mary S. Tilbury, R.N.  
Tipco Technologies  
Ms. Terri Lyons  
Mr. Rob Lyons  
Transamerica Retirement Solutions  
Verdence Capital Advisors, LLC  
Mr. Leo Kelly III  
Estate of Alvin Wagenheim  
The Washington Times  
The Honorable Barbara B. Waxman and Carl M. Waxman, O.D.  
Weatherby Healthcare  
Toby and Melvin Weinman Foundation  
The Morris Weinman Memorial Foundation  
Judith Welch  
Marlene and Brian White  
Theophilus & Marie Cover White Fund  
Ms. Helen Whitehead and Mr. Louis Salafia  
Mr. Cleveland and Dr. Victoria Wilson

\*DECEASED

## OUR LEADERSHIP



**Neil Meltzer**  
President and Chief Executive Officer



**David Krajewski**  
Executive Vice President and Chief Financial Officer; President, LifeBridge Health Partners



**Leslie Simmons, RN, FACHE**  
Executive Vice President; President, Carroll Hospital



**Deborah Graves**  
Senior Vice President; President and Chief Operating Officer, LeVindale Hebrew Hospital and Nursing Center



**Jonathan Ringo, M.D.**  
Senior Vice President; President and Chief Operating Officer, Sinai Hospital



**Faraaz Yousuf**  
Senior Vice President; President and Chief Operating Officer, Northwest Hospital



**Jonathan Binder**  
Chief Operating Officer, LifeBridge Health Partners



**Julie Cox**  
Vice President and Chief Development Officer



**Laura Callahan**  
Vice President, Chief Compliance Officer



**Terrence Carney**  
Vice President, Supply Chain Management



**Brian Deffaa**  
Chief Marketing Officer, Strategic Marketing and Communications



**Daniel Durand, M.D.**  
Vice President and Chief Innovation Officer



**Susan Mani, M.D.**  
Vice President, Clinical Transformation and Ambulatory Quality



**Tony Morris**  
Senior Vice President and Chief Revenue Officer



**Martha Nathanson**  
Vice President, Government and Community Development



**Matthew Poffenroth, M.D.**  
Chief Clinical Officer, Physician Enterprise



**James Roberge**  
Vice President, Capital Improvements and Support Services



**Joe Quinn**  
Senior Vice President and Chief Human Resources Officer



**Tressa Springmann**  
Senior Vice President and Chief Information Officer, Enterprise IT and Process Improvement



**Jason Weiner**  
Senior Vice President and General Counsel



**Darleen Won**  
Vice President, Strategic Planning and Analytics

# Board of Directors

As recent events at both the local and national levels have illustrated so clearly, the time, attention and direction board members provide is fundamental to an organization's leadership team and serves as an impartial and guiding hand that is critical to its success.

LifeBridge Health has been fortunate in recent years to benefit from successive board leaders who have offered clear and collaborative stewardship to our organization. This guidance has fostered significant growth and allowed LifeBridge Health to better fulfill our purpose: caring for our communities together.

LIFEBRIDGE HEALTH



**Barry F. Levin, Esq.**

Chairman  
Managing Partner  
Saul Ewing Arnstein & Lehr LLP



**Brian L. Moffet, Esq.**

Vice Chairman  
Principal  
Miles & Stockbridge P.C.

CARROLL HOSPITAL

LEVINDALE HEBREW HOSPITAL AND NURSING CENTER

NORTHWEST HOSPITAL

SINAI HOSPITAL



**Jeffrey A. Wothers, Esq.**

Chairman  
Carroll Hospital Board of Directors  
Partner  
Niles, Barton & Wilmer LLP



**Abba D. Poliakoff, Esq.**

Chairman  
Levindale Hebrew Hospital and Nursing Center  
Board of Directors  
Partner  
Gordon Feinblatt LLC



**Paul L. Saval, Esq.**

Chairman  
Northwest Hospital Board of Directors  
President and CEO  
Saval Foods Corporation



**Gregory J. Rochlin**

Chairman  
Sinai Hospital Board of Directors  
CEO  
Ilera Healthcare

**LifeBridge Health Board of Directors**

Lynn E. Abeshouse  
Laura Black  
Jason A. Blavatt, Esq.  
Marc P. Blum, Esq.  
Joseph A. Cooper  
Lee Coplan  
Charles O. Fisher, Jr., Esq.  
Ronnie B. Footlick  
Louis F. Friedman, Esq.  
Brian J. Gibbons, Esq.  
Martin K.P. Hill  
Harry Kaplan, M.D.  
Donald Kirson  
Barry F. Levin, Esq.  
Brenda Weil Mandel  
Neil M. Meltzer  
Brian L. Moffet, Esq.  
Thomas F. Obrecht  
Abba D. Poliakoff, Esq.  
Gregory Rochlin  
Frank B. Rosenber  
Paul L. Saval, Esq.  
Ethan A. Seidel, Ph.D.  
Thomas D. Welliver  
Helen W. Whitehead  
Jeffrey A. Wothers, Esq.  
Alec Yeo

**Carroll Foundation Board of Trustees**

Mark Blacksten  
Dirk Bowman  
Martin Burns  
Timothy Chase  
Joan Develin Coley, Ph.D.  
Amber Curtis, Esq.  
Mark Debinski  
Karen Durilla  
Christine Gerstmyer  
Dona Hobart, M.D.  
Christopher Holt  
Kevin Kelbly  
Del. Susan Krebs  
Kiran Kuna, M.D.  
Barry Levin, Esq.  
Terri Lyons  
Kent Martin  
Neil M. Meltzer  
Alex Myers  
Ellen Finnerty Myers  
Mark Powers  
Marcus Lee Primm  
Leslie Simmons  
Terry Smack  
Jeffrey Wothers, Esq.

**Carroll Hospice Board of Directors**

James Andersen  
R. Wayne Barnes  
Regina Bodnar  
Ann Bollinger  
Janet Buchanan, D.Min.  
Carolyn Burns  
James Covey  
Mary Darrell  
Shirlyn Evans-Ford  
Laura Gillen  
Todd Herring  
Christina Kanther  
Del. Susan Krebs  
Gary Merry  
John W. Middleton, M.D.  
James Miller, P.D.  
Todd Mitchell  
Ellen Finnerty Myers

**Carroll Hospital Board of Directors**

David Bollinger  
Amber Dahlgreen Curtis  
Kimberly A. Johnston  
Deltuva, M.D.  
Todd Herring  
Martin K.P. Hill  
Sarah K. Lentz, M.D.  
Barry Levin, Esq.  
Neil M. Meltzer  
Marcus Lee Primm  
Leslie Simmons  
John A. Steers, M.D.  
Stanley H. "Jack" Tevis III  
Thomas D. Welliver  
Jeffrey A. Wothers  
Helen W. Whitehead  
Alec Yeo  
Tom Zirpoli, Ph.D.

**Levindale Hebrew Hospital and Nursing Center Board of Directors**

Michael Albo  
Allan C. Alperstein  
Keith Attman  
Rochelle Bohrer  
Marc A. Cohen  
Robert I. Damie  
Gerald B. Feldman, M.D.  
Jason A. Frank, Esq.  
Deborah Graves  
Gil Horwitz  
Esther Jacobson  
Kevin M. Keane

Jayne Z. Klein  
Barry F. Levin, Esq.  
Scott S. London, Esq.  
Neil M. Meltzer  
Howard Perlow  
Abba D. Poliakoff, Esq.  
Bernard Rubin, M.D.  
Lynn B. Sassin, Esq.  
Ethan Seidel, Ph.D.  
Richard Shatzkin  
Michele Shermak, M.D.  
Robert Smelkinson  
Marc B. Terrill  
David Uhlfelder  
Debra S. Weinberg

**Northwest Hospital Board of Directors**

Ronald Attman  
Jaime J. Simon-Barnes, D.O.  
Jody Berg  
Jason A. Blavatt, Esq.  
Charles O. Fisher, Jr., Esq.  
Reuven Goodman  
Harold I. Hackerman  
Ira K. Himmel, Esq.  
Richard F. Kemper, Esq.  
Donald Kirson  
Barry F. Levin, Esq.  
Audrey Lifcovich  
Nick Mangione, Jr.  
Neil M. Meltzer  
Joseph Migliara  
Bill Miller  
Thomas F. Obrecht  
Michael H. Renbaum  
Louis E. Sapperstein  
Paul L. Saval, Esq.  
Mark Simanowith  
Barry S. Walters, M.D.  
Howard M. Weiss  
Joel R. Wohl  
Faraaz A. Yousuf  
N. Paul Zemankiewicz, D.O.

**Sinai Hospital Board of Directors**

Janet D. Allan, Ph.D.  
Richard M. Alter  
Leonard Attman  
Richard I. Berman  
Ling-Ling Cheng, M.D.  
Joseph A. Cooper  
Eric W. Cowan, Esq.  
Jonathan N. Davidov  
David Dopkin  
Jonathan D. Eisner, Esq.

Amy Elias  
Nupur Parekh Flynn  
Ronnie B. Footlick  
Louis F. Friedman, Esq.  
Michael Gaines  
David Goldner  
Nancy Hackerman  
Donald Himelfarb  
Daniel Hirschhorn  
Mark Katlic, M.D.  
Dawn Kirstaetter  
Marcy Kolodny  
David Kuntz  
Alvin Lapidus  
Barry F. Levin, Esq.  
Jon H. Levinson  
Andrew S. Levine  
Kevin Luskin  
Ailene Mash  
Neil M. Meltzer  
Brian L. Moffet, Esq.  
Yehuda Neuberger  
Martin I. Passen, M.D.  
Jonathan Ringo, M.D.  
Michael J. Posko  
Gregory J. Rochlin  
Leslie Schaller  
Jay Steinmetz  
Barry Stoler  
Hillel Tendler, Esq.  
Marc Terrill  
Maxwell Thanhouser  
Frank Tworecke  
Michael Uhlfelder  
Christopher Wasson  
Robin Weiman  
Debra S. Weinberg  
Dennis H. Weinman  
Maury Weinstein

LIFEBRIDGEHEALTH.ORG

**CARE BRAVELY**

 **LIFEBRIDGE HEALTH**<sup>®</sup>

Carroll Hospital • Levindale • Northwest Hospital • Sinai Hospital